



ARCH CONSULTANTS LTD 2019 YEAR IN REVIEW

Reflecting on our journey in 2019, ARCH Consultants reexamined what made us so successful over our almost two full decades tenure and revamped our brand to stay true to our firm's past while looking ahead to future goals. As we close out the year, we are pleased to unveil our new logo and provide selected highlights of work in progress.

This year, ARCH continued to serve as a strategic partner to 42 projects spanning all regions of the nation. In the process, we extended a warm welcome to 6 new partnering organizations. As affiliates and associates of industry organizations, we attended 18 conferences that allowed us the opportunity to broaden our building and industry knowledge and fine tune our expertise.

ARCH succeeded in maintaining a national presence with a local focus, getting to know and

appreciate the individuality of every community we work in. ARCH's proven process and our understanding of each unique project helped us to deliver successful built environments and set us apart from the competition.

We celebrated one year in the new headquarter office space with the ARCH staff who share a continued commitment to unwavering advocacy for our Owners' interests. We continue to build on our reputation as a trusted partner by applying our experience to ensure that operational program expectations and building goals are exceeded for every client and project we work with.

We are grateful for the colleagues and friends in Senior, Learning, Healing and Civic environments that have contributed to our success. We look forward to building on these relationships, forming new partnerships and advocating for our clients in the years to come.

ARCH will continue to guide organizations from vision to occupancy—and beyond.



A stylized, handwritten signature in black ink, appearing to read 'Frank'.

Frank Muraca
President



42

PROJECTS



18

CONFERENCES



190

NEW LINKEDIN
FOLLOWERS



14

AFFILIATES &
ASSOCIATIONS



2

ARTICLES
PUBLISHED



120+

BUSINESS TRIPS

THE ARCH TEAM

FRANK MURACA

PRESIDENT

Founded ARCH and leads the planning of senior living environment projects.

JUSTIN SAGER

SENIOR PROJECT MANAGER

Applies his diverse experience in capital budgeting and construction management to lead ARCH's West Coast project efforts.

BRITTANY VIPHAM

COMMUNICATIONS DIRECTOR

Establishes organizational tools to effectively keep stakeholders up to date and leads ARCH's facilities management support efforts.

SANDY NOONAN

ACCOUNTING MANAGER

Manages ARCH's accounting and finance functions including coordination of project accounting and construction-in-progress tracking.

SCOTT HABERKORN

PROJECT MANAGER

Manages complex building projects, leading ARCH's East Coast project efforts.

KEITH SHEAHAN

PROJECT MANAGER

Provides construction administration and construction oversight, leading ARCH's Midwest project efforts.

LAURA MURACA

INFORMATION TECHNOLOGY
DIRECTOR

Supports all information technology including office infrastructure as well as providing and overseeing help desk services.

JIM BRODY

SENIOR CONSTRUCTION
ADMINISTRATOR

Analyzes complex building systems, leading ARCH's construction administration services.

UNVEILING OUR NEW LOGO

The addition of the words Development Advisors is a clear representation of our value proposition and unwavering commitment to Clients. Our highly specialized expertise in capital project management empowers Clients to make informed decisions throughout the complex building process.



ARCH
DEVELOPMENT ADVISORS

Staying true to our roots, ARCH remains the bold orange color that has consistently represented the firm.

The ARCH team takes pride in being conscientious corporate citizens, serving not only as guides throughout the building process, but as guides in our community. This year, ARCH employees were encouraged to focus their philanthropic efforts on a cause important to them.

Employee featured events include: Frank Muraca volunteering with his family at Feed My Starving Children to pack meals for those in-need; Brit Vipham and wife Taylor volunteering at Buffalo Grove Pride's National Coming Out Celebration, creating a safe space for LGBTQ teens in the community; and

Sandy Noonan's book club started the first Illinois Chapter of the Laundromat Library League, which makes children's books available to children who have little or no access to books at home.

The ARCH team is also committed to giving back to our clients and colleagues by participating in and contributing to their fundraising events. ARCH's 2019 highlights included Episcopal

Communities & Services Foundation Fall Celebration to honor their affordable housing residents, Friendship Senior Options Sterling Awards Event and Eben Ezer Lutheran Care's Legacy Golf Tournament. Justin Sager was eager to join in on the fun at the Fall celebration interacting with staff and residents. Frank Muraca and daughter Francesca enjoyed getting dressed up and dancing the night away at the Sterling event. We continue to enjoy every minute of helping our clients succeed in reaching their goals.

SERVING OUR COMMUNITIES

Corporate Social Responsibility Highlights





RICHFIELD LIVING



THE LEGACY AT NORTH AUGUSTA



MERCY MEDICAL BUILDING

BREAKING NEW GROUND

For Clients Nationwide



ARCH was proud to celebrate the groundbreaking of projects nationwide this year. The Legacy at North Augusta broke ground in the spring for their addition and memory care unit renovation in Virginia where ARCH serves as Owner's Representative. MedProperties Group broke ground on a new medical office building in Arizona, where ARCH serves as Project Manager. Richfield Living broke ground on a phased expansion in Virginia where ARCH serves as Construction Monitor.



THE VILLAGE AT ROCKVILLE

Expansion

The Village at Rockville Glenmere expansion includes one hundred and thirty independent living units and a variety of amenities including dining, wellness, aquatics, and entertainment spaces. This National Lutheran Communities

& Services campus expansion is well underway with construction completion anticipated in early 2020. The beautiful new buildings complement the existing campus while providing an updated design aesthetic that responds to industry trends and expectations.

ARCH guided the master planning process and helped determine the most appropriate building layout on a constrained site. We currently provide capital project management services overseeing the construction on behalf of the community.





“ARCH has assisted The Village at Rockville, A National Lutheran Community, on numerous projects over the years. Most recently, we partnered on an expansion project that consist of 130 Independent Living units and Community Engagement Center. Serving as our Owner’s Representative, they are ensuring the community’s best interests are at the forefront of decisions. Their design and construction knowledge helps clarify complex topics which then allow us to make informed decisions throughout the process.”

Kyle Hreben, Executive Director
The Village at Rockville

130

INDEPENDENT LIVING
UNITS

1

NEW AQUATICS
PROGRAM IN
WELLNESS CENTER

295,000+

SQUARE FEET OF NEW
CONSTRUCTION



MONTECEDRO

Master Plan



“ARCH was brought on as development advisors to lead the master planning at MonteCedro, which includes an expansion and optimization of the campus. With ARCH’s industry experience and local understanding, they coordinate with the multidisciplinary team and regulatory agencies to expedite the entitlement process. We also look forward to their expertise as we enhance existing spaces with the best sequence of construction activities to minimize disruptions to operations and residents on campus. We value our partnership with ARCH as we move forward with this important project at MonteCedro and future projects together.”

Sharon Pewtress, VP Strategic Growth
Episcopal Communities & Services



Design is underway for this Episcopal Communities & Services campus expansion at an existing vibrant community near Los Angeles, California. The proposed Master Plan project consists of forty new Villa independent living units, shared amenity spaces and underground parking at the

MonteCedro Community. In addition, the project includes interior renovations to resident amenity spaces within the existing building.

ARCH provides Development Advisory Support services, overseeing the current pre-construction efforts.



40
NEW INDEPENDENT
LIVING UNITS

4
NEW VILLAS

10,000+
SQUARE FEET
OF RENOVATIONS





BROADMEAD

Repositioning

Broadmead's repositioning includes a new entry, upgraded commons, renovated health care spaces, an added wellness area and two new hybrid home independent living apartment buildings. This phased construction is well underway for both the existing building renovations and the fifty-two hybrid units.

After previously overseeing the pre-construction phase, ARCH now provides Owner's Representative services, overseeing the construction process in concert with a local representative. The campus remains occupied during construction requiring a heightened level of coordination and communication between members of the project team and the community for the master plan implementation.



"ARCH's vast experience with repositioning brings confidence that our best interests are considered throughout the development process. They continue to assist in making sure all stakeholders are involved in Broadmead's inclusive project approach."

John Howl, Chief Executive Officer
Broadmead



94
ACRE
COMMUNITY

52
NEW HYBRID
HOME UNITS

1
NEW
CENTER OF
EXCELLENCE

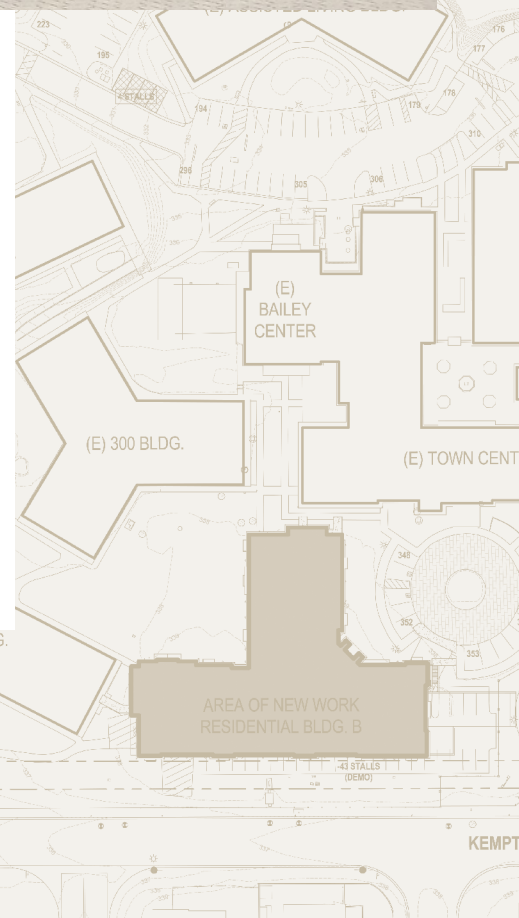


COVENANT LIVING AT MOUNT MIGUEL

Expansion



Covenant Living at Mount Miguel's residential expansion includes thirty new independent living units with underground parking adjacent to the newly completed Town Center on campus. Design for the two-story building is currently underway with construction anticipated to begin in 2020. ARCH serves as Owner's Representative overseeing the current pre-construction efforts. Master planning continues for the campus repositioning.





“ARCH provided us with critical financial, developmental, and technical support to guide us through the challenges of a very complex project. Their knowledge and expertise proved to be invaluable.”

Rich Miller, Regional Director of Operations
Covenant Living Communities and Services

30

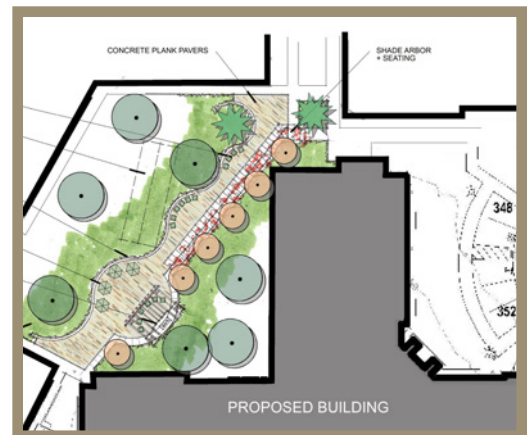
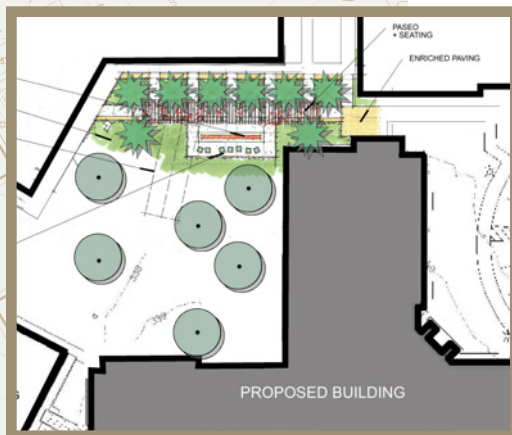
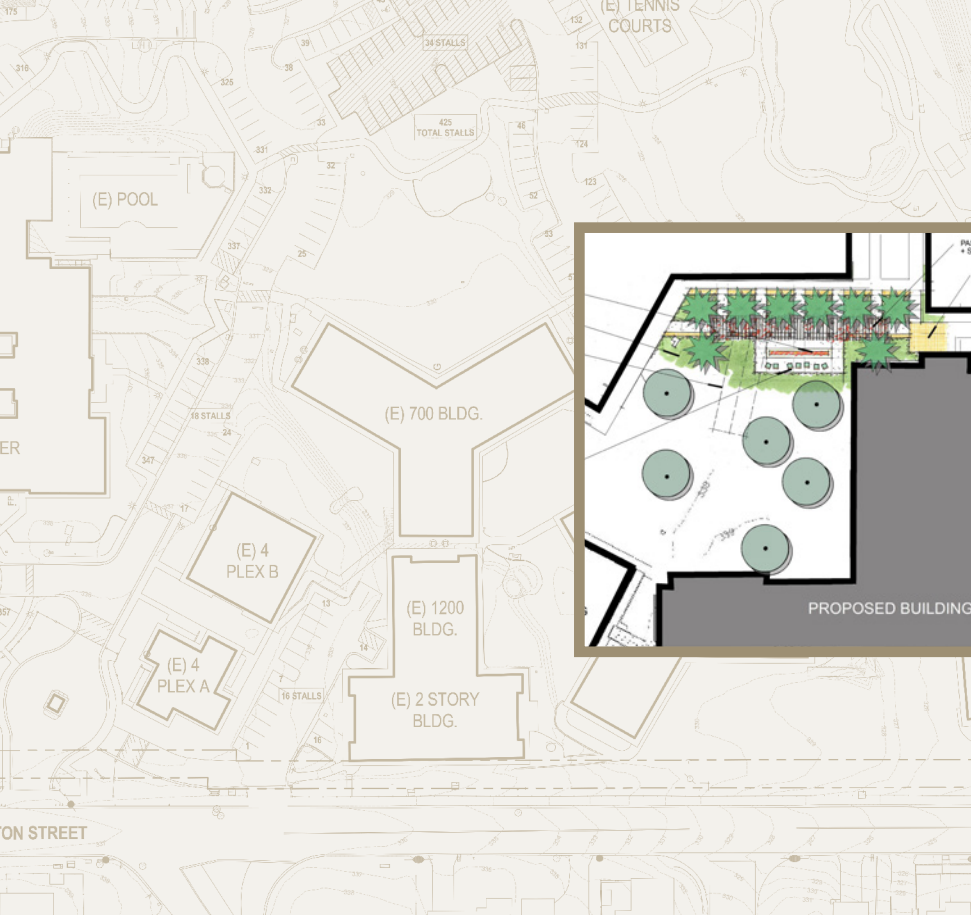
NEW INDEPENDENT
LIVING UNITS

2nd

PHASE OF MASTER PLAN

1

BEAUTIFUL OUTDOOR
AMENITY SPACE



YOUR TRUSTED PARTNERS

We Are...

ADVOCATES who represent our clients' best interest in dealings with other organizations and individuals involved in the building process.

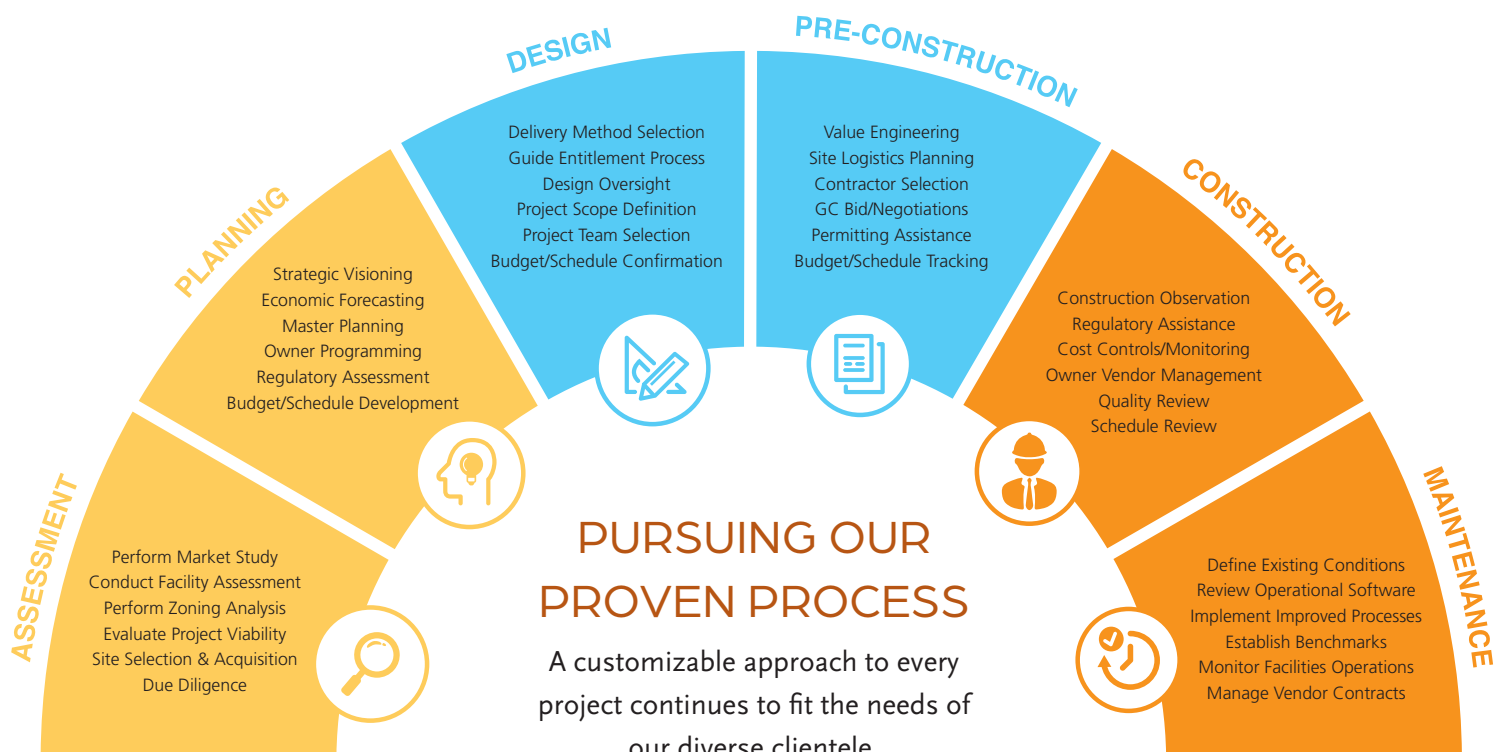
PARTNERS who complement our clients' in-house staff resources with our own specialized knowledge, experience, and leadership.

RESPONSIBLE CORPORATE CITIZENS who align ourselves with our clients' sustainability goals and always offer our expertise in sustainable building practice.

STEWARDS of our clients' construction resources, ensuring that time and money are well invested and carefully managed.

COLLABORATORS who bring enthusiasm, commitment, and integrity to every project, infusing teams with our spirit of common purpose.

ETHICAL and committed, as a firm and as individuals, to the highest standards of conduct and respect for others in everything we do.





*We thank our clients and partners for a successful 2019
and look forward to ongoing partnerships for many more years.*

Augsburg Village	The Legacy at North Augusta
Benedictine Health Systems	Meadow Ridge
Broadmead	MedProperties Group
The Canterbury	Monarch Landing
Canterbury-on-the Lake	MonteCedro
Casa de las Campanas	Mount Miguel Covenant Village
Chicago Methodist Senior Services	National Lutheran Communities & Services
The Clare	Richfield Living
Clare Oaks	Sedgebrook
Duncaster	Senior Care Development
Eben Ezer Lutheran Care Center	The Village at Orchard Ridge
Episcopal Communities & Services	The Village at Providence Point
Friendship Village of Schaumburg	The Village at Rockville
Homewood Retirement Centers	



20